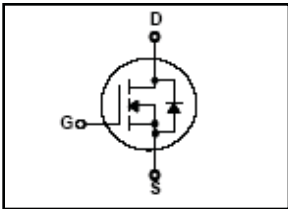


HRS370N10K

60V N-Channel Trench MOSFET

| |
|--|
| $BV_{DSS} = 100\text{ V}$ |
| $R_{DS(on) \text{ typ}} = 30\text{ m}\Omega$ |
| $I_D = 25\text{ A}$ |



FEATURES

- Originative New Design
- Superior Avalanche Rugged Technology
- Excellent Switching Characteristics
- Unrivalled Gate Charge : 50 nC (Typ.)
- Extended Safe Operating Area
- Lower $R_{DS(ON)}$: 30 m Ω (Typ.) @ $V_{GS}=10\text{V}$
- 100% Avalanche Tested

Absolute Maximum Ratings $T_C=25^\circ\text{C}$ unless otherwise specified

| Symbol | Parameter | Value | Units |
|----------------|---|-------------|---------------------|
| V_{DSS} | Drain-Source Voltage | 100 | V |
| I_D | Drain Current – Continuous ($T_C = 25^\circ\text{C}$) | 25 * | A |
| | Drain Current – Continuous ($T_C = 100^\circ\text{C}$) | 17.5 * | A |
| I_{DM} | Drain Current – Pulsed (Note 1) | 88 * | A |
| V_{GS} | Gate-Source Voltage | ± 20 | V |
| E_{AS} | Single Pulsed Avalanche Energy (Note 2) | 80 | mJ |
| E_{AR} | Repetitive Avalanche Energy (Note 1) | 4.5 | mJ |
| P_D | Power Dissipation ($T_C = 25^\circ\text{C}$) - Derate above 25°C | 45 | W |
| | | 0.3 | W/ $^\circ\text{C}$ |
| T_J, T_{STG} | Operating and Storage Temperature Range | -55 to +175 | $^\circ\text{C}$ |
| T_L | Maximum lead temperature for soldering purposes, 1/8" from case for 5 seconds | 300 | $^\circ\text{C}$ |

* Drain current limited by maximum junction temperature

Thermal Resistance Characteristics

| Symbol | Parameter | Typ. | Max. | Units |
|-----------------|---------------------|------|------|---------------------------|
| $R_{\theta JC}$ | Junction-to-Case | -- | 3.1 | $^\circ\text{C}/\text{W}$ |
| $R_{\theta JA}$ | Junction-to-Ambient | -- | 62.5 | |

Electrical Characteristics $T_J=25\text{ }^\circ\text{C}$ unless otherwise specified

| Symbol | Parameter | Test Conditions | Min | Typ | Max | Units |
|---|---|--|-----|------|-----------|---------------|
| On Characteristics | | | | | | |
| V_{GS} | Gate Threshold Voltage | $V_{DS} = V_{GS}, I_D = 250\ \mu\text{A}$ | 2.2 | -- | 3.8 | V |
| $R_{DS(ON)}$ | Static Drain-Source On-Resistance | $V_{GS} = 10\ \text{V}, I_D = 12\ \text{A}$ | -- | 30 | 37 | m Ω |
| g_{FS} | Forward Transconductance | $V_{DS} = 5\ \text{V}, I_D = 12\ \text{A}$ | -- | 21 | -- | S |
| Off Characteristics | | | | | | |
| BV_{DSS} | Drain-Source Breakdown Voltage | $V_{GS} = 0\ \text{V}, I_D = 250\ \mu\text{A}$ | 100 | -- | -- | V |
| I_{DSS} | Zero Gate Voltage Drain Current | $V_{DS} = 80\ \text{V}, V_{GS} = 0\ \text{V}$ | -- | -- | 1 | μA |
| | | $V_{DS} = 80\ \text{V}, T_J = 125\text{ }^\circ\text{C}$ | -- | -- | 100 | μA |
| I_{GSS} | Gate-Body Leakage Current | $V_{GS} = \pm 20\ \text{V}, V_{DS} = 0\ \text{V}$ | -- | -- | ± 100 | nA |
| Dynamic Characteristics | | | | | | |
| C_{iss} | Input Capacitance | $V_{DS} = 25\ \text{V}, V_{GS} = 0\ \text{V}, f = 1.0\ \text{MHz}$ | -- | 2650 | -- | pF |
| C_{oss} | Output Capacitance | | -- | 140 | -- | pF |
| C_{riss} | Reverse Transfer Capacitance | | -- | 95 | -- | pF |
| R_g | Gate Resistance | $V_{GS} = 0\ \text{V}, V_{DS} = 0\ \text{V}, f = 1\ \text{MHz}$ | -- | 1.2 | -- | Ω |
| Switching Characteristics | | | | | | |
| $t_{d(on)}$ | Turn-On Time | $V_{DS} = 50\ \text{V}, I_D = 12\ \text{A}, R_G = 6\ \Omega$ | -- | 30 | -- | ns |
| t_r | Turn-On Rise Time | | -- | 20 | -- | ns |
| $t_{d(off)}$ | Turn-Off Delay Time | | -- | 110 | -- | ns |
| t_f | Turn-Off Fall Time | | -- | 25 | -- | ns |
| Q_g | Total Gate Charge | $V_{DS} = 80\ \text{V}, I_D = 12\ \text{A}, V_{GS} = 10\ \text{V}$ | -- | 50 | -- | nC |
| Q_{gs} | Gate-Source Charge | | -- | 10 | -- | nC |
| Q_{gd} | Gate-Drain Charge | | -- | 13 | -- | nC |
| Source-Drain Diode Maximum Ratings and Characteristics | | | | | | |
| I_S | Continuous Source-Drain Diode Forward Current | | -- | -- | 25 | A |
| I_{SM} | Pulsed Source-Drain Diode Forward Current | | -- | -- | 88 | |
| V_{SD} | Source-Drain Diode Forward Voltage | $I_S = 12\ \text{A}, V_{GS} = 0\ \text{V}$ | -- | -- | 1.3 | V |
| t_{rr} | Reverse Recovery Time | $I_S = 12\ \text{A}, V_{GS} = 0\ \text{V}, di_F/dt = 50\ \text{A}/\mu\text{s}$ | -- | 55 | -- | ns |
| Q_{rr} | Reverse Recovery Charge | | -- | 80 | -- | nC |

Notes :

1. Repetitive Rating : Pulse width limited by maximum junction temperature
2. $L=1\ \text{mH}, I_{AS}=11\ \text{A}, V_{DD}=25\ \text{V}, R_G=25\ \Omega$, Starting $T_J=25\text{ }^\circ\text{C}$

Typical Characteristics

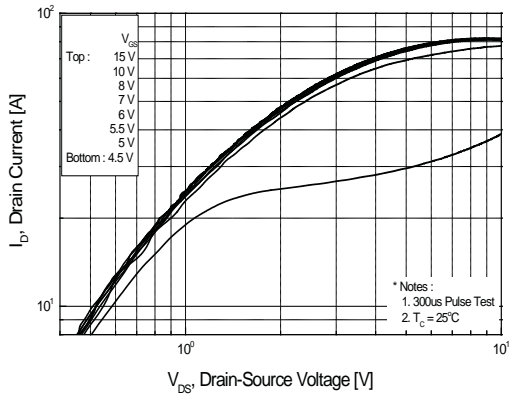


Figure 1. On Region Characteristics

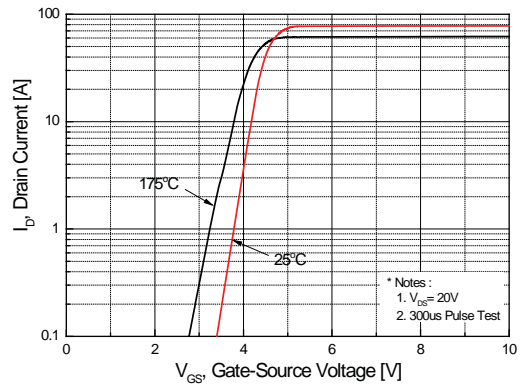


Figure 2. Transfer Characteristics

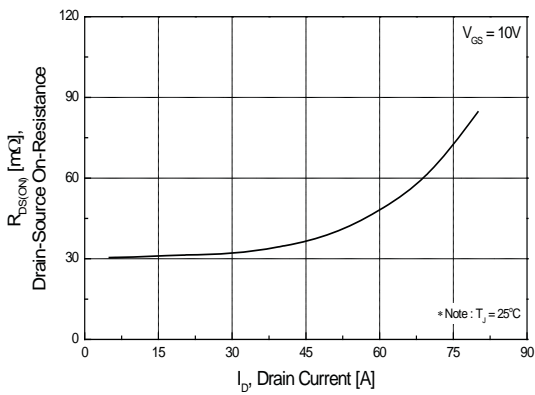


Figure 3. On Resistance Variation vs Drain Current and Gate Voltage

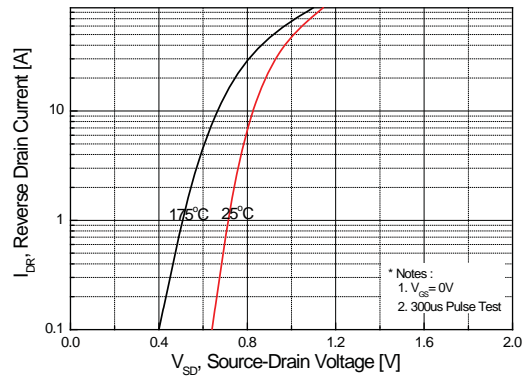


Figure 4. Body Diode Forward Voltage Variation with Source Current and Temperature

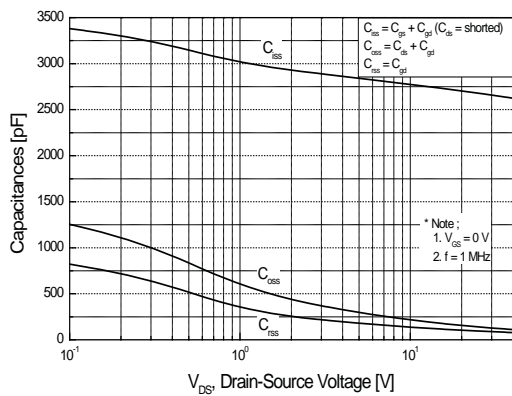


Figure 5. Capacitance Characteristics

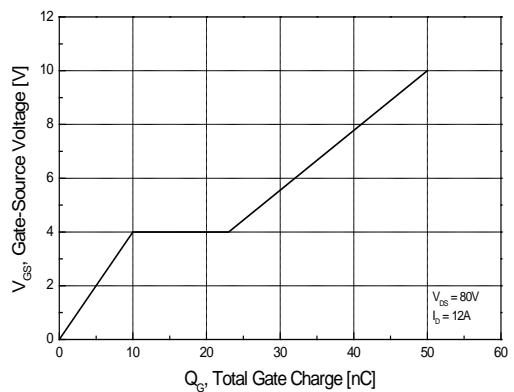


Figure 6. Gate Charge Characteristics

Typical Characteristics (continued)

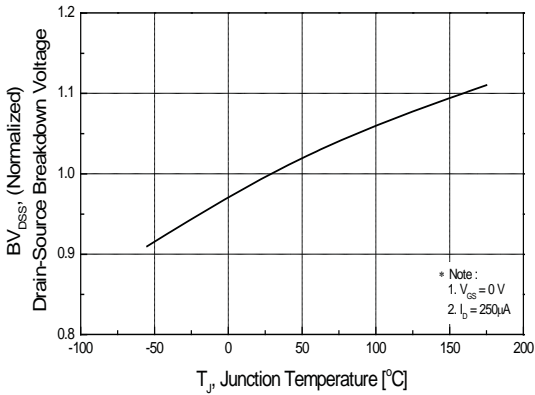


Figure 7. Breakdown Voltage Variation vs Temperature

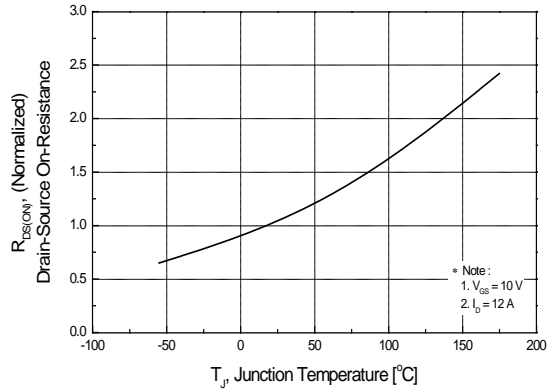


Figure 8. On-Resistance Variation vs Temperature

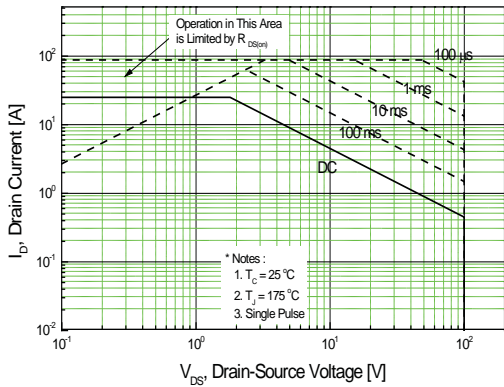


Figure 9. Maximum Safe Operating Area

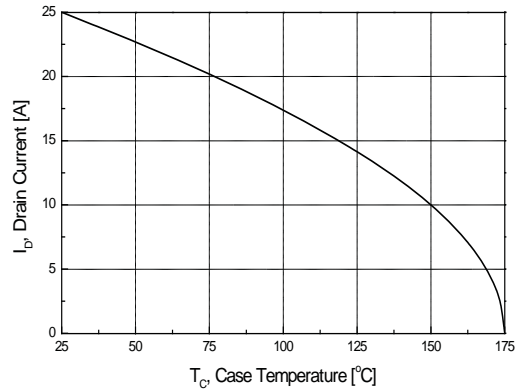


Figure 10. Maximum Drain Current vs Case Temperature

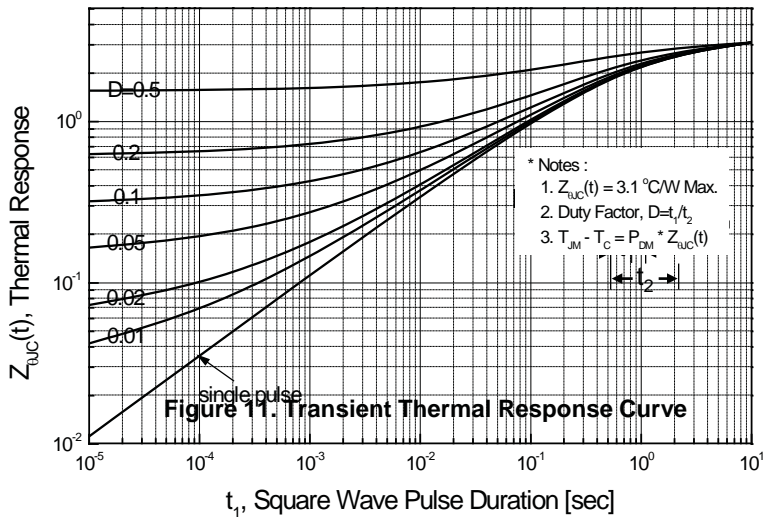


Figure 11. Transient Thermal Response Curve

Fig 12. Gate Charge Test Circuit & Waveform



Fig 13. Resistive Switching Test Circuit & Waveforms

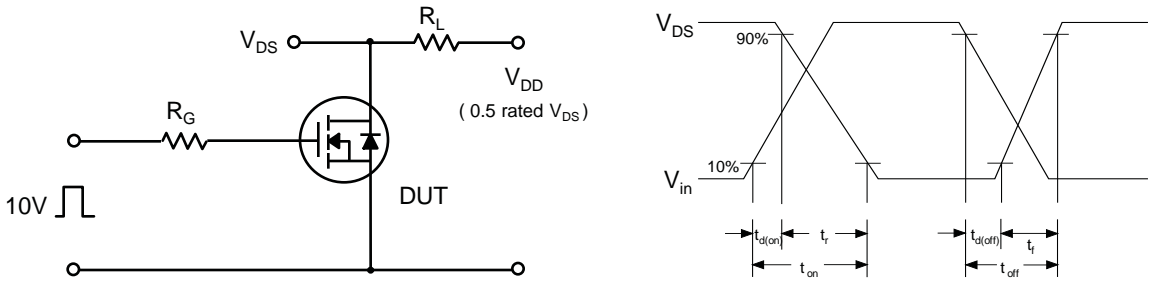


Fig 14. Unclamped Inductive Switching Test Circuit & Waveforms

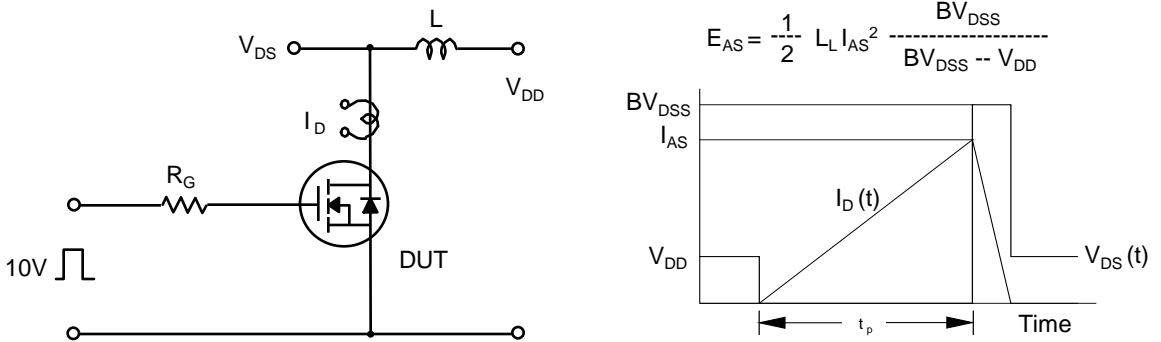
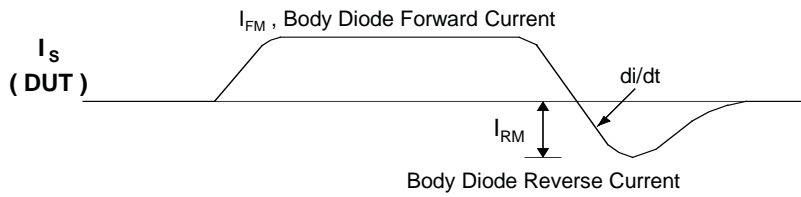
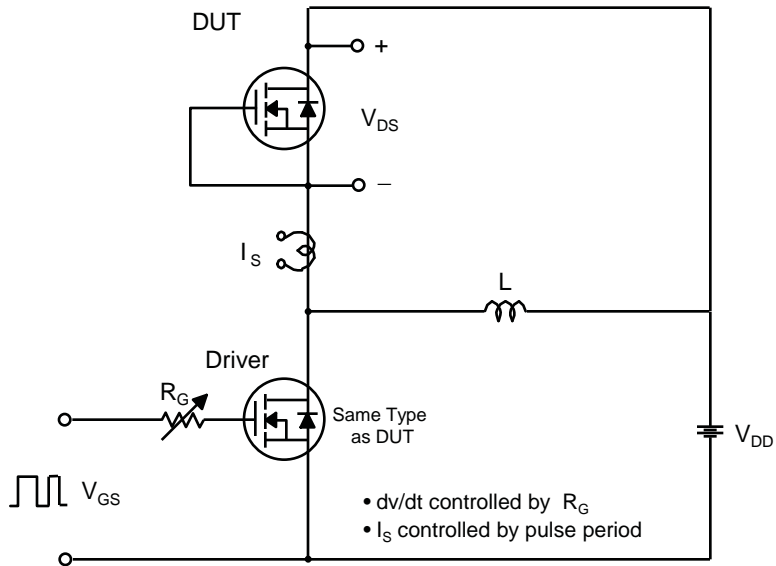


Fig 15. Peak Diode Recovery dv/dt Test Circuit & Waveforms



Package Dimension

TO-220F

